

Vegetation Management

SAN ANSELMO TOWN COUNCIL

May 24, 2022



PG&E's Vegetation Management Programs

- Trim trees to meet or exceed state vegetation and fire safety standards.
- Cut down dead, diseased, or dying trees that pose a risk to powerlines.
- Evaluate the condition of trees that may need to be addressed if they are tall enough to strike powerlines or equipment.
- Trim or cut down trees and shrubs to increase defensible space or construct stronger, more resilient electric equipment.





State and Regulatory Requirements

PG&E is legally required to maintain minimum clearances and address and abate trees that pose a hazard to our electric powerlines and facilities according to the following regulations:

California Public Utilities Commission* (CPUC)

[General Order 95, Rule 35](#)

California Public Resources Code (PRC)

[Section 4292](#) [Section 4293](#)

**Under [Article XII](#) of the California Constitution, PG&E's vegetation management work is under the sole jurisdiction of the CPUC, which preempts local discretionary authority over public utility projects.*

Routine Vegetation Management Program

When This Work Occurs

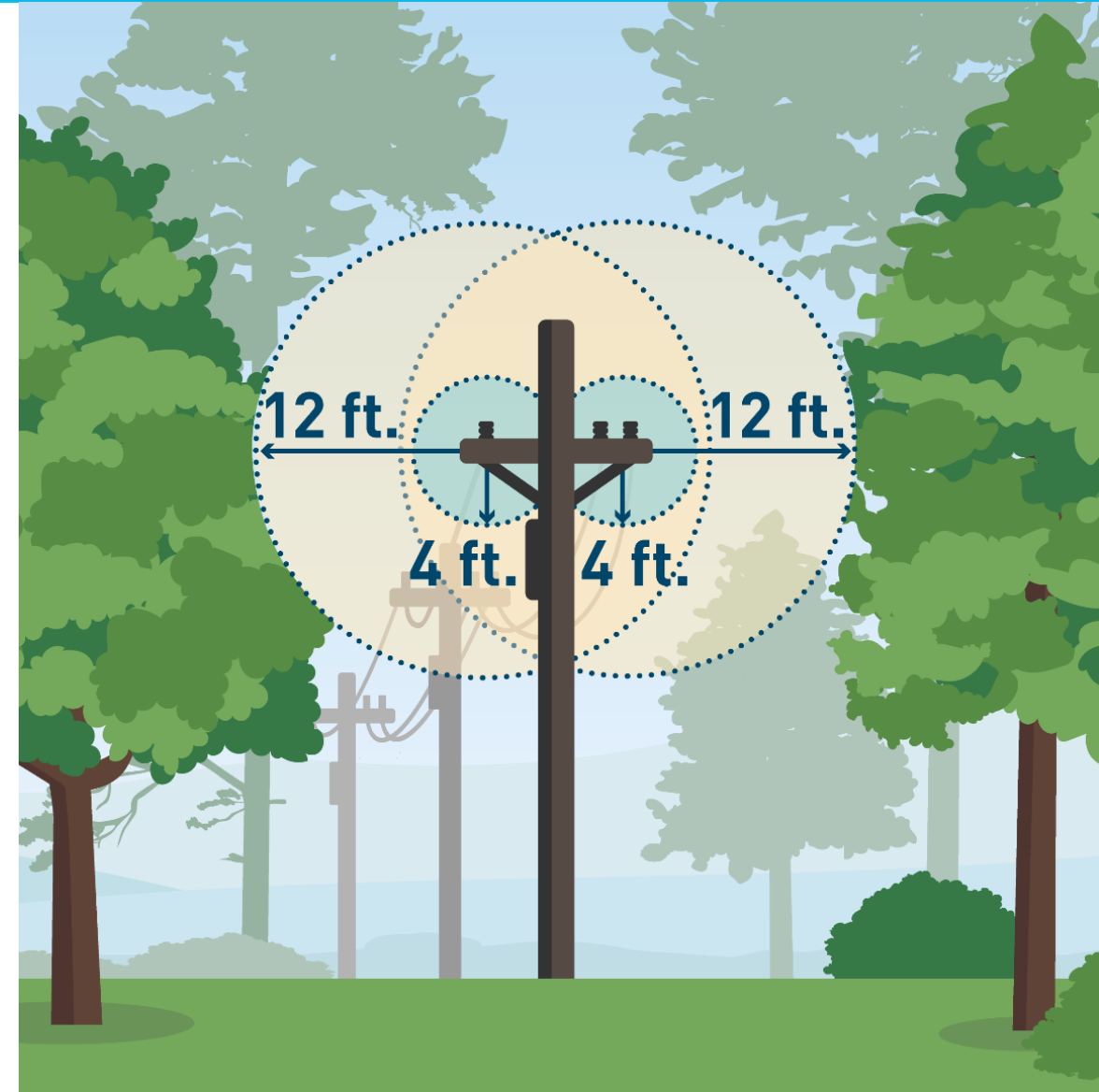
- Once annually

Where This Work Occurs

- Along all primary electric distribution lines and equipment

What This Work Involves

- Trimming or cutting down dead, diseased, dying and defective trees that pose a threat to PG&E facilities
- Maintaining required minimum clearances of:
 - 1.5 feet in non-High Fire-Threat Districts
 - 4 feet, with recommended 12 feet minimum at time of prune in High Fire-Threat Districts



Drought and Tree Mortality Program

When This Work Occurs

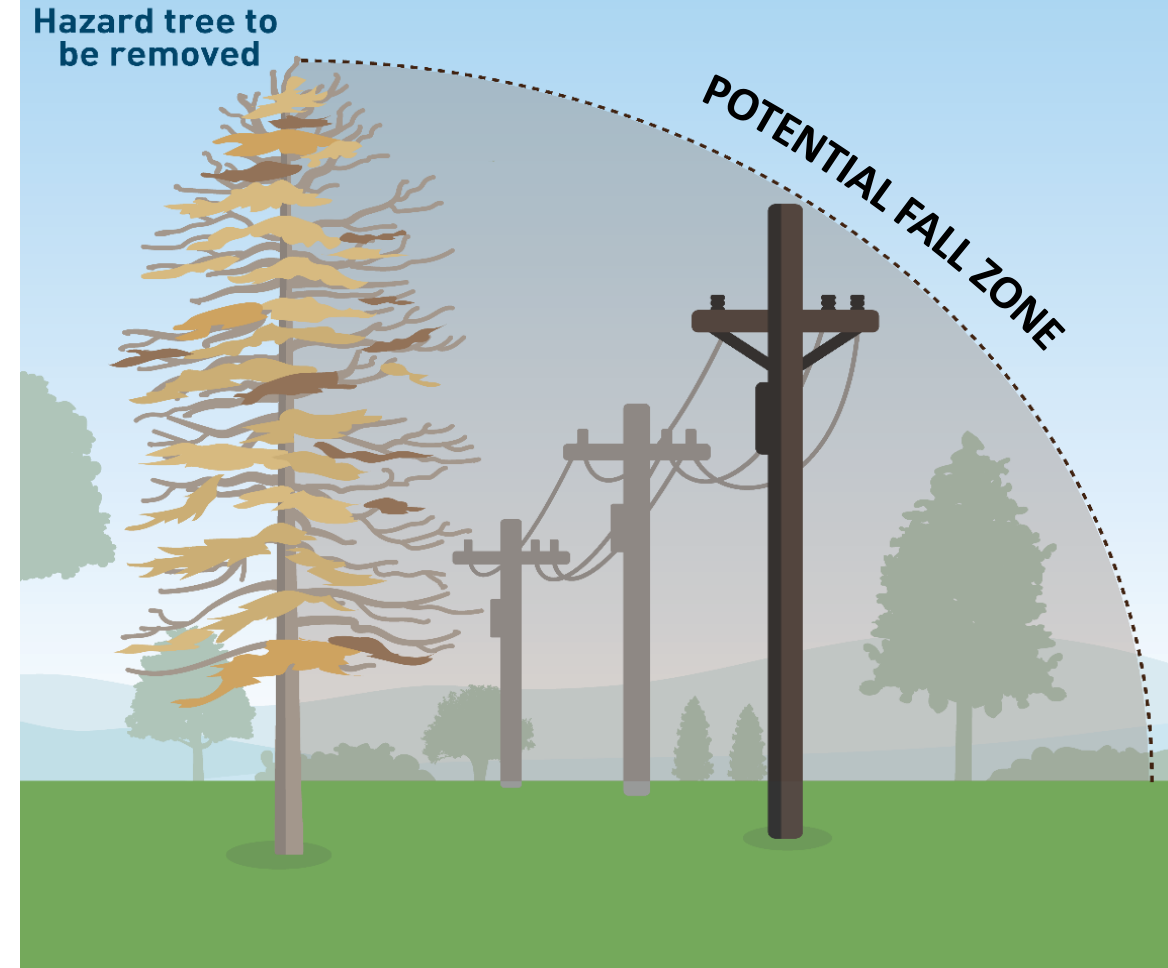
- Once annually, six months after Routine Vegetation Management

Where This Work Occurs

- Along primary electric distribution lines and equipment in High Fire-Threat Districts

What This Work Involves

- An additional inspection to ensure clearance requirements
- Cutting down all dead, dying and diseased trees that pose a threat to PG&E facilities



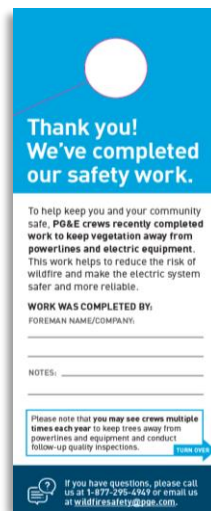
How We're Engaging With Customers

It's important that our customers and communities are informed about our important vegetation management work. We are committed to informing customers before, during and after the work occurring in 2022. Here are a few ways we are keeping customers informed:

Pre-Inspection Door Hanger



Tree Work Complete Door Hanger



Pre-Inspection Postcard



Tree Work Postcard



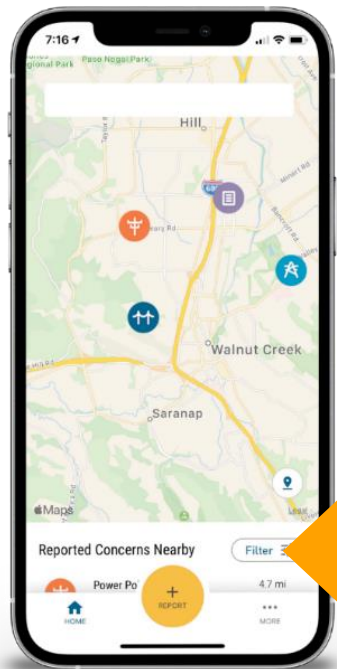
Mailer





Customer and Community Resources

Customers who have questions about our vegetation management work can contact us directly at: **1-800-743-5000**



**“PG&E Report It”
Safety App**
allows customers to
submit photos of non-
emergency safety concerns

pge.com/reportit

To see a map of completed and planned EVM work visit:

pge.com/customerpspsplanningmaps

